

BEAMS, LADDERS & TRESTLES

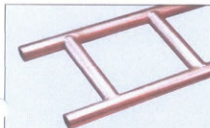
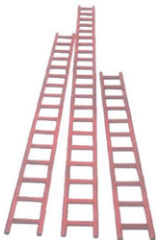
Ladder Beam

To provide a clear span between scaffolds. 305mm deep and 305mm centre to centre rungs. Constructed from 48.3mm O/D x 3.2mm high tensile steel and saddle welded at every joint, they fully integrate with existing fittings.

Finish: painted or galvanised

Length	Weight	Code painted	Code galvanised
3.33m (11')	25kg	558111	558236
4.877m (16')	45kg	558116	558249
6.400m (21')	65kg	558121	558264

Other lengths can be supplied to order.



Ladder Beam - safe load table

Span (m)	UDL on top chord	Centre point load
3.05	29.9kN	18.9kN
4.57	24.2kN	15.2kN
6.10	17.6kN	10.4kN

Cantilever

Maximum span	2m
Maximum point load	7.13kN
Maximum UDL	12.93kN

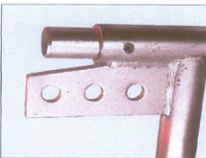
Data assumes beams are concentrically loaded and fully braced, top and bottom chord including lateral restraint.

Unit Beam

To provide a clear span between scaffolds or may be assembled as a pre-fabricated framework for temporary buildings. Self locating ends provides rapid assembly. M24 x 45 high tensile bolts, nuts & washers supplied.

Length	Weight	Code
1.8m (6')	30.1kg	009217
2.7m (9')	40.5kg	009218
3.6m (12')	51.6kg	009216

Finish: galvanised



Technical Information

Unit Beam - safe load table

Span (m)	UDL on top chord	Point load per node	Point load on mid span
3.66	4.38kN/m	12.35kN	20kN
4.88	3.54kN/m	8.78kN	20kN
6.10	2.84kN/m	6.4kN	16kN
9.75	1.5kN/m	2.5kN	10kN
12.19	1.0kN/m	1.5kN	7.9kN
14.63	0.8kN/m	1.1kN	6.6kN

Data assumes beams are concentrically loaded and fully braced, top and bottom chord including lateral restraint.

Steel Ladder

A heavy duty non-combustible, warp-free steel ladder. Hot dip galvanised for maximum corrosion protection.

Finish: hot dip galvanised

Length	Weight	Code
3m	15.00kg	050001
4m	28.00kg	050004
5m	35.00kg	050005
6m	42.00kg	050006
7m	49.00kg	050007



Can also be supplied with customer identification plates.

Leaning ladders should be set at a working angle of 75%: i.e. one metre out for four metres of height.

If used on a scaffold, the top of the ladder should extend at least 1.05 metres above the platform to provide adequate hand holds at all stepping off points.

Boulton Trestles

Stable, lightweight and strong for a uniform safe working load of 460kg to BS1139 Part 4 1982. Finish: painted

Size	Weight	Height Closed	Height Extended	Code
No.1	7.5kg	0.51m	0.71m	007614
No.2	9.5kg	0.76m	1.17m	007624
No.3	10.5kg	1.07m	1.68m	007634

Patent No. 220 9920/2210129



KDK Scaffolding Ltd